

Research



**Cite this article:** Pfau M, Degregori S, Johnson G, Tennenbaum SR, Barber PH, Philson CS, Blumstein DT. 2023 The social microbiome: gut microbiome diversity and abundance are negatively associated with sociality in a wild mammal. *R. Soc. Open Sci.* **10**: 231305. <https://doi.org/10.1098/rsos.231305>

Received: 22 June 2023

Accepted: 18 September 2023

**Subject Category:**

Organismal and evolutionary biology

**Subject Areas:**

behaviour/microbiology/ecology

**Keywords:**

social microbiome, microbial diversity, social connectedness, yellow-bellied marmot

**Authors for correspondence:**

Conner S. Philson

e-mail: [cphilson@ucla.edu](mailto:cphilson@ucla.edu)

Daniel T. Blumstein

e-mail: [marmots@ucla.edu](mailto:marmots@ucla.edu)

<sup>†</sup>Conner S. Philson and Daniel T. Blumstein are co-senior (or co-last) author.

Electronic supplementary material is available online at <https://doi.org/10.6084/m9.figshare.c.6858169>.

# The social microbiome: gut microbiome diversity and abundance are negatively associated with sociality in a wild mammal

Madison Pfau<sup>1</sup>, Sam Degregori<sup>1</sup>, Gina Johnson<sup>1</sup>,  
Stavi R. Tennenbaum<sup>2,3</sup>, Paul H. Barber<sup>1</sup>,  
Conner S. Philson<sup>1,2,†</sup> and Daniel T. Blumstein<sup>1,2,†</sup>

<sup>1</sup>Department of Ecology and Evolutionary Biology, University of California, 621 Young Drive South, Los Angeles, CA 90095-1606, USA

<sup>2</sup>Rocky Mountain Biological Laboratory, PO Box 519, Crested Butte, CO 81224, USA

<sup>3</sup>Department of Ecology and Evolutionary Biology, Princeton University, Princeton, NJ 08544, USA

CSP, 0000-0002-5974-347X; DTB, 0000-0001-5793-9244

The gut microbiome has a well-documented relationship with host fitness. Greater microbial diversity and abundance of specific microbes have been associated with improved fitness outcomes. Intestinal microbes also may be associated with patterns of social behaviour. However, these associations have been largely studied in captive animal models; we know less about microbiome composition as a potential driver of individual social behaviour and position in the wild. We used linear mixed models to quantify the relationship between fecal microbial composition, diversity and social network traits in a wild population of yellow-bellied marmots (*Marmota flaviventris*). We focused our analyses on microbes previously linked to sociability and neurobehavioural alterations in captive rodents, primates and humans. Using 5 years of data, we found microbial diversity (Shannon–Wiener and Faith’s phylogenetic diversity) has a modest yet statistically significant negative relationship with the number of social interactions an individual engaged in. We also found a negative relationship between *Streptococcus* spp. relative abundance and two social network measures (clustering coefficient and embeddedness) that quantify an individual’s position relative to others in their social group. These findings highlight a potentially consequential relationship between microbial composition and social behaviour in a wild social mammal.

# 1. Introduction

Collective communities of microorganisms in the vertebrate gut, known as the gut microbiome, are pervasive across the animal kingdom [1–3]. Technological advancements in recent years have broadened the potential to study the role microbes play in host physiology and behaviour [5,6]. The symbiotic microorganisms that live in the host's gut, for example, may influence host activity and behaviour, including various aspects of metabolic processes and energy balance [7,8], immune system maturation [9] and nutrient intake [10,11]. Microbial diversity is also associated with Darwinian fitness; improved functional redundancy increases individual disease resilience [12,13]. For example, microbial diversity provides functional redundancy, strengthening an individual's ability to mitigate fitness consequences from the loss or damage to a particular member of the microbial community [14]. These studies demonstrate that a diverse abundance of some microbes in mammalian guts are important to fitness, potentially mediated by neurological and immune function [10,15].

Recent studies identify the brain–gut axis—the communication between the central and enteric nervous systems—as a potential mechanism for the relationship between the gut microbiome, fitness and behaviour [16]. The microbiome has been implicated in stress modulation [9], infant health and metabolism [17], and as a key factor influencing the likelihood of stress-related disorders and diseases [18,19]. In humans, gut microbiome variation can shape personality differences [20], while in non-human animals, studies demonstrate the brain–gut axis's relationship with individual emotions and learning [21] and social behaviour [10,22]. These findings support the concept of the brain gut axis for both social and non-social behaviours.

Social behaviours and group-living have long been associated with fitness through the ability to find mates, acquire food and avoid predators [23–25]. These interactions can influence how populations and territories form and change over time [26]. While studies show that both the microbiome and social behaviour in group-living species individually contribute to fitness, less is known about the gut microbiome–sociality relationship. In a recent study of free-living rhesus macaques (*Macaca mulatta*), a sociality index was related to the abundance of key genera (*Streptococcus* and *Faecalibacterium*; [27]). Studies in rodents have also shown relationships between social connectivity and microbial diversity and abundance [28].

These prior studies have explored the link between the microbiome and sociality in the wild. However, most studies have focused on one causal direction: how social behaviour drives microbiome composition via transmission and acquisition [29–32]. Fewer studies have explored how microbial composition and diversity may influence individual social behaviours [4,33,34]. Given this relationship probably works both ways [35], and given the fitness consequences of sociality and the established role of the brain–gut axis, the microbiome as a driver of sociality may have ecological and evolutionary implications and requires explicit study.

Most studies to date that examined the microbiome as a potential driver of social behaviour have focused on humans or on captive non-human animals (but see [4,33]). In contrast to captive animal systems, wild animals inherit microbial material from a wide range of sources, experience variation in environmental stressors that may be associated with an immune-mediated microbiome response and have higher overall microbial diversity than captive animals [36–39]. These factors can increase microbial diversity and suggest a need for adequate study of the effects of natural drivers of microbial variation and potential associated changes in social behaviour.

We studied associations between microbial diversity and composition with social network attributes in a well-studied population of yellow-bellied marmots (*Marmota flaviventris*) [40]. Marmots are a good natural model to address the sociality–microbiome relationship due to their natural social variability and an available half-decade dataset consisting of individual social observations and microbial samples. Moreover, extensive studies have identified associations between social attributes and marmot fitness (survival: [41–43], alarm call propensity: [44], reproductive success: [45,46], and longevity: [47]), providing a strong foundation for exploring the sociality–microbiome relationship through a structured, exploratory analysis. While the direction of causality is difficult to determine, experimental evidence in laboratory rodent systems shows that changes in gut microbial abundance results in changes in social behaviour (reviewed in [10,16]), bolstering support for studying this direction of this relationship in our wild rodent system.

In marmots, high social connectivity is often associated with reduced fitness: strong affiliative relationships are associated with reduced reproductive success and longevity and a higher likelihood of mortality over the winter hibernation period [43–45,47]. This may be due to yellow-bellied marmots being facultatively social (they may live alone or with others), where most other well-studied social mammals are obligately social, and benefit from group living and increased social connectivity [48].

Gut microbial diversity is associated with gut community stability and increased fitness in other systems [14,49] because it increases resilience against environmental uncertainty [50] and increases immune function [51]. Thus, we initially predicted microbial diversity would be positively associated with sociality in this system because increased heterogeneity and stability may facilitate predictable social behaviours, potentially decreasing social stress [52]. However, given the negative fitness consequences of sociality in our system, an alternative prediction is that gut microbial diversity may relate to decreased social connectivity. Microbial diversity has also been associated with fitness variation in this system. For example, particular microbes such as Firmicutes and lower Bacteroidetes are associated with faster mass gain, an essential fitness correlate of successful hibernation [53]. Given this, we generally predicted that microbes which were associated with increased sociality in other species (table 1) would have a similar relationship in this system. Alternatively, given the fitness costs of increased social connectivity for yellow-bellied marmots (the opposite of most social mammals; [48]), we could generally predict that social-inducing microbes may be negatively associated with sociality in marmots.

Specific *a priori* predictions were developed for microbes in the context of their relationship to sociality from previously identified associations in other species. For example, *Streptococcus* spp. have been negatively associated with a sociability index in wild primates [27] because individuals with pathogenic infections may have less energy to allocate to social interactions. Thus, we also predicted that marmots with higher *Streptococcus* spp. abundance will be less social. Further justifications for the development of these *a priori* predictions and their direction can be found in electronic supplementary material, table S1. Given that many microbes, even when examined at the genus and species levels, can have contradictory effects on behaviour, and the facultatively social nature of the yellow-bellied marmot system, these *a priori* predictions are relevant for our system. Other studies should take into account the biology of their system when developing taxon-specific predictions.

## 2. Material and methods

### 2.1. Site specifics and data collection

We studied yellow-bellied marmots from 2015 to 2020 at the Rocky Mountain Biological Laboratory in the Upper East River Valley in Gothic, CO, USA (38°57' N, 106°59' W; ca 2900 m elevation). Marmots were individually marked and studied at the same colonies annually. Colonies were grouped into two core areas designated as 'higher elevation' or 'lower elevation' sites [46]. About 300 m higher, the higher elevation sites experienced harsher weather conditions than the lower elevation areas [61–63].

To uniquely mark individuals and collect fecal microbiome samples, we placed Tomahawk live traps at burrow entrances to capture live marmots. We then transferred trapped individuals to a cloth handling bag and recorded morphological features including body mass, sex, reproductive status and left hindfoot length, before giving each individual a unique metal ear tag (Monel self-piercing fish tags #3, National Band and Tag, Newport, KY) and dorsal fur mark with non-toxic Nyanzol-D dye (Greenville Colorants, Jersey City, NJ) to facilitate identification from afar. To obtain microbiome samples, we collected fecal samples from the traps or during handling which were then placed into a plastic resealable bag and immediately placed on ice before being transferred to a –20°C freezer to await processing [53]. Marmots were in traps for no more than 3 h, meaning fecal samples collected were recent. Fecal matter was cleaned from the traps between use and traps were left in the sun for 6–24 h between use (providing some level of sterilization). If two or more marmots were captured in the same trap at the same time, no fecal samples were collected so as to not misattribute samples to individuals.

We conducted behavioural observations using binoculars and spotting scopes from 20 to 150 m away, distances that limited observer effects on subjects while maximizing the ability to quantify behaviours [64]. We conducted observations during peak marmot activity (7.00–10.00 and 16.00–19.00; [65]), recording and classifying all social interactions as either affiliative (e.g. play, allogrooming) or agonistic (e.g. fighting, chasing). In addition, we recorded the individuals initiating and receiving each interaction as well as the date, time and location of each interaction.

Data were collected under the UCLA Institutional Animal Care and Use protocol (2001-191-01, renewed annually) and with permission from the Colorado Parks and Wildlife (TR917, renewed annually).

**Table 1.** Basic descriptions of the function of each microbe, relationship to social behaviour, and supporting references. Provided to support biological significance of each microbe.

microbe	function	references
<b>phyla</b>		
Bacteroidetes	Gram-negative bacteria phylum that is associated with decreased likelihood of neurological disorders and depression	[10,15]
Firmicutes	Gram-positive phylum that is negatively associated with social stress and avoidance, and depressive behaviours	[10,15]
<b>family</b>		
Lachnospiraceae	considered a core microbe in adult microbiomes; lack of the family in development is linked to neurodevelopmental disorders	[15,54]
Ruminococcaceae	core microbe: associated with enzyme degradation of plant material; decreased abundance associated with autism in humans	[53,55]
Bifidobacteriaceae	core family, associated with higher dominance behaviours	[56]
Prevotellaceae	significantly enriched in animals exhibiting dominant behaviours	[56]
<b>genus</b>		
<i>Lactobacillus</i>	modulates inflammatory response; increased <i>Lactobacillus</i> reduces stress response and anxiety	[57]
<i>Clostridium</i>	social stress correlated with abundance of <i>Clostridium</i> ; increased abundance also associated with isolation	[10]
<i>Desulfovibrio</i>	increased abundance leads to decreased memory, social isolation and impaired learning behaviours	[16]
<i>Coprococcus</i>	reduced levels were associated with autism spectrum disorder compared with healthy controls; associated with better life quality	[58]
<i>Faecalibacterium</i>	has been associated with upregulation of T cells and anti-inflammatory function	[27,59]
<i>Sutterella</i>	more abundant in individuals with higher sociality index, associated with increased direct connectivity in wild social systems	[27]
<i>Streptococcus</i>	includes pathogenic strains that can cause disease; associated with less sociality and isolation	[27]
<i>Prevotella</i>	more abundant in individuals with higher sociality index; reduced abundance also associated with autism spectrum disorder	[27]
<b>species</b>		
<i>Bacteriodes fragilis</i>	corrects abnormalities in gut lining and corrects the toxic release of cytokines from other microbes; is associated with decreased instances of autism spectrum disorder in mice	[15]
<i>Bifidobacterium longum</i>	associated with object exploration, memory and decreased anxiety symptoms	[16]
<i>Streptococcus bovis</i>	associated with pathology of endocarditis and chronic inflammation; very common pathogenic microbe in animal guts	[60]

## 2.2. Microbiome data processing

Microbiome data collection and analysis followed [53]. Briefly, we isolated bacterial DNA from fecal samples collected from 148 unique individuals using the Qiagen Powersoil Extraction Kit following manufacturer protocols. We generated 16S DNA libraries using the 806R (5'-GGACTACHVHHHTWTCTAAT) and 515F

(5'-GTGCCAGCMGCCGCGGTAA) primers targeting the V4 region of the 16S rRNA gene [66]. Target DNA was amplified by PCR using Qiagen Multiplex PCR kits. Following indexing, we sent samples to Laragen (Culver City, CA, USA) for pooling and quantification to create libraries with equimolar sample concentrations. Multiplexed libraries were paired-end sequenced (300 bp per sequence) on an Illumina Miseq v. 3 at Laragen Sequencing yielded a total of 20 839 221 raw sequencing reads. Overall, sample sequencing depth ranged from 4 reads to 235 203 reads.

We analysed the resulting sequences using QIIME2 (version 2019.9; [67]). First, we imported raw forward and reverse reads and visualized the demultiplexed sequences to determine ideal cut-offs for truncation [67]. Quality control was then completed using the QIIME2 DADA2 denoising tool. All samples were rarefied to a minimum depth of 1000 reads, which yielded a final set of 4 529 579 reads across 286 samples from 148 unique individuals. We summarized the denoised data in a feature table and used this to determine microbial community diversity indices using QIIME2 diversity tools. To examine alpha diversity for downstream analysis in linear mixed models, we calculated Shannon–Wiener diversity and Faith’s phylogenetic diversity using a phylogenetic tree generated from the feature table. In order to maintain samples with expected low diversity values, a 1104 sampling depth was implemented in accordance with [53]. We then examined beta diversity at a whole-system level due to its efficiency when analysed comparatively [38,68]. We calculated beta diversity using unweighted UniFrac distances using PERMANOVA with the ‘adonis2’ function in the Vegan package (version 2.6-4) for interactions and calculating a PERMANOVA across all samples (999 permutations, performed in QIIME2 v. 2022.2) for main effects and pairwise comparisons [69]. Amplicon sequence variance (ASV) was also used to identify taxonomic assignment at varying levels.

Then, using the *phyloseq* (version 1.38.0) package in R (4.1.3; [70,71]), taxonomic assignments were merged with raw abundance data (the number of reads associated with feature IDs). The data were cleaned to remove phyla of Eukaryota and Cyanobacteria as well as the Mitochondria family and Chloroplast order. This was done to ensure that only microbes from marmot hosts were included in the data, not microbes that probably originated from digested plant materials in the fecal samples. Any unassigned phyla were also filtered out of the dataset. For each taxonomic level, the counts across all samples were taken to obtain relative abundance metrics for all runs. Then, centred log ratios (CLR) were performed to remove constraints on the compositional data [72,73]. Any duplicate feature IDs were also removed which yielded a total of 236 observations once paired with the sociality data. We used these values to calculate a weighted average of all microbe abundances in the marmot microbiome. Abundance plots and bacterial association networks with all taxa and their relative abundance were made using the *phyloseq* package in R.

### 2.3. Social network measures

Since marmots share space and burrows with a subset of all individuals at each colony, we defined social groups based on space-use overlap annually (two individuals seen or trapped at the same location and time, or observed using the same burrow, within a one-day interval). Using SOCPROG (version 2.9; [74]), we determined annual simple-ratio pairwise association indices [75] for adults and yearlings. We excluded pups because they emerge halfway through the year and typically interact exclusively with each other and their mother. Association indices were based on the space-use overlap and proportion of time a pair of individuals were seen together each year. We used these indices in the random walk algorithm Map Equation to identify social group membership [76–78]. Map Equation assigns individuals to a single group. However, because social interactions with adult males play a consequential role in marmot social groups by mating with females from multiple matriline, we added adult males to each group for which they had at least one social interaction with a member of that group [79]. This addition enabled more accurate social network measures to be calculated by maintaining social ties with adult males. Though, for males, network traits were calculated only from their originally assigned group to avoid individual duplicates in the data.

Before constructing networks, we filtered social interactions in two ways. First, we excluded interactions with unknown recipients or initiators to use interactions with only known individuals and direction. While most interactions occurred between identified individuals (81.3% of observed interactions), the initiator and/or recipient could not be identified for some interactions as the interaction was already occurring when the observer arrived or visual obstructions (e.g. marmot orientation to observer, tall vegetation). The exclusion of these undirected interactions between unidentified individuals should not significantly influence social structure [80]. Secondly, we excluded any individuals that were seen or trapped fewer than five times, since these individuals

**Table 2.** Descriptions of the six social network measures used to quantify social behaviour and network position. A higher value of each measure corresponds to higher sociality/connectivity.

social measure	description	references
degree	number of social partners an individual has	[64,81]
strength	number of social interactions an individual partakes in, including repeated interactions	[41]
closeness	how centralized an individual is in a network calculated by the reciprocal of the sum of the shortest path lengths between a focal individual and all other individuals in its network	[82,83]
eigenvector centrality	a measure of how connected an individual's social mates are	[41]
clustering coefficient	a measure of an individual's clustering within their network	[84]
embeddedness	quantifies how connected to the group an individual is based on the number of independent links to others in the group	[41,45,64]

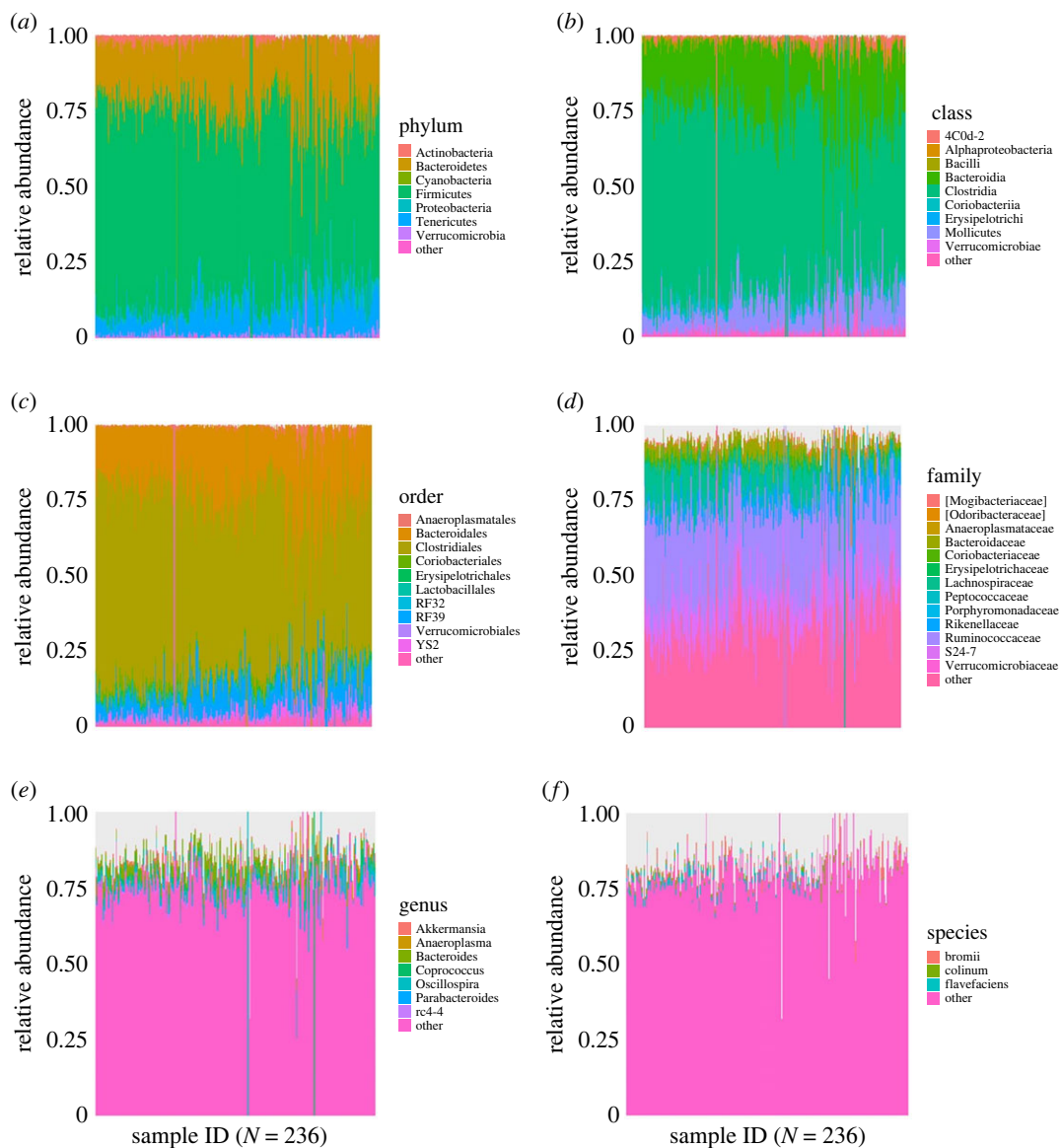
were transients or were dispersing, meaning their interactions were not considered a part of the social group [43–45,47].

With these refined data, we constructed directed and weighted social networks for each year separately based on affiliative interactions using 'igraph' (version 1.2.11; [71,76]) for each Map Equation defined group in each year. These affiliative networks consisted of 14 093 total social interactions across 66 social groups. We then used social network analysis (SNA) to examine the properties of these social networks. Using SNA, we calculated six social network measures: degree, strength, closeness, eigenvector centrality, clustering coefficient and embeddedness (table 2). The relatively low rate of unknown individuals in our observations, which occurred over the entire active season of these marmots, facilitates the reliability of our social network measures [80,85,86]. We selected each social network measure based on its biological relevance and connection to the individual nature of microbiome data (table 2).

## 2.4. Data analysis

We fitted two suites of linear mixed-effects models using *lme4* (version 1.1-30; [87]) to analyse the relationship between social network traits and microbial diversity and abundance. First, we fitted 12 models to quantify the relationship between the six social traits (as the dependent variables) and two microbial diversity measures (Shannon's and Faith's diversity indexes). To control for temporal variance influencing microbial composition, we only included the earliest sample we had for each individual in each year in our analysis. For both Shannon's diversity index and Faith's diversity index, models had 205 observations across 135 unique individuals. Both sets of models consisted of 50 social groups across 5 years (2015–2020). Second, we fitted 102 abundance models for each social trait and each microbe's abundance value. These models had 236 observations consisting of 148 unique individuals in 51 social groups spanning 5 years. The difference in sample size between the diversity and abundance models was due to QIIME2's sampling depth, which reduces sample size for diversity indexes but not for abundance calculations. Clustering coefficient models consisted of 210 observations across 142 unique individuals as clustering coefficient cannot be calculated for certain group sizes (e.g. group of two) or structures (e.g. linear group).

Each social trait was the dependent variable and microbial metrics were included as an independent variable. Additional fixed effects included age class (yearling or adult), valley position (higher or lower elevation), sex and group size. Individual ID and year were fitted as random effects to account for individual and interannual variation. We  $\log_{10}$  transformed degree, strength, closeness, eigenvector centrality, embeddedness and group size to better meet model assumptions. All continuous variables (the six social traits, group size and all microbial metrics) were standardized (mean-centred and divided by 1 s.d. using the base 'scale' function in R; [88]). We checked residuals using the *performance* package (version 0.10.2; [89]) to confirm Gaussian assumptions were met. Marginal and conditional  $R^2$  values for



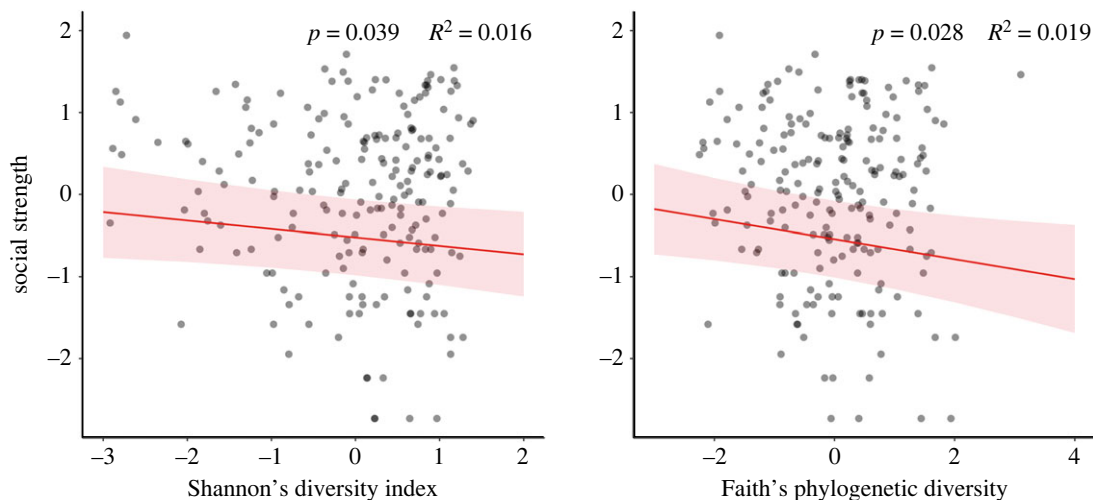
**Figure 1.** The relative abundance distributions for all taxonomic levels, with sample ID indicating the number of samples and colours corresponding to differing microbial categorizations. The yellow bars accounted for ‘other’ categorization. Resolution of microbial taxonomic assignment was reduced at lower taxonomic levels.

each model and the semi-partial marginal and conditional  $R^2$  that estimate variance explained by each fixed effect were calculated using the *partR2* package (version 0.9.1; [90,91]). We estimated 95% confidence intervals for our  $R^2$  values using 100 parametric bootstrap iterations. Figures were generated with the R package *ggplot2* (version 3.4.0; [92]) and *sjPlot* (version 2.8.12; [93]).

## 3. Results

### 3.1. Microbiome abundance and distribution

At the phyla level, Firmicutes (64.8%) and Bacteroidetes (20.3%) had the highest relative abundance (figure 1a) with all other phyla accounting for less than 15%. At the class level, Clostridia and Bacteroidia microbes dominated with 58.3% and 22.5%, respectively (figure 1c), and orders within Clostridiales and Bacteroidales accounting for approximately 80.8% of all gut microbes (figure 1b). At the family level, Ruminococcaceae had the highest relative abundance (28.8%) followed by Muribaculaceae (14.1%), Lachnospiraceae (6.2%), Bacteroidaceae (3.2%) and Rikenellaceae (2.2%) (figure 1d). The remaining were either unassigned family groupings or had significantly lower abundance. Owing to decreasing taxonomic



**Figure 2.** Statistically significant relationships between social strength (number of social interactions) and Shannon's diversity index and Faith's phylogenetic diversity (after controlling for all covariates in the model). Strength was  $\log_{10}$  transformed and both strength and the two diversity measures were scaled (mean-centred and divided by 1 s.d.; [88]).  $p$ -value and marginal semi-partial  $R^2$  for each fixed effect are reported.

resolution with increasing taxonomic specificity, genus and species-level composition distributions were of low abundance. However, after filtering out unassigned values we found that at the genus level, *Oscillospira* spp. accounted for 13.8% of all assigned microbes, *Bacteroides* spp. made up 13.5%, *Ruminococcus* spp. accounted for 12.2%, and *Coprococcus* spp. *Akkermansia* spp. *Parabacteroides* spp. *Anaeroplasma* spp. and *Clostridium* spp. together accounted for the other 23.2% of high abundance microbes assigned (figure 1e). At the species level, *Ruminococcus bromii* was the species in highest abundance at 21.1%, *Ruminococcus flavefaciens* and *Clostridium colinum* also had high abundance relative to other assigned microbes, with 19.5% and 11.8%, respectively (figure 1f). The skew of microbial distribution towards a select few microbes across different levels and across multiple individuals and social groups suggests low overall diversity of gut microbiota in this wild population of marmots. However, a more even distribution was seen at lower taxonomic levels relative to higher diversity in assigned family, genus and species assignments.

### 3.2. Gut microbe diversity explains variation in some social network measures

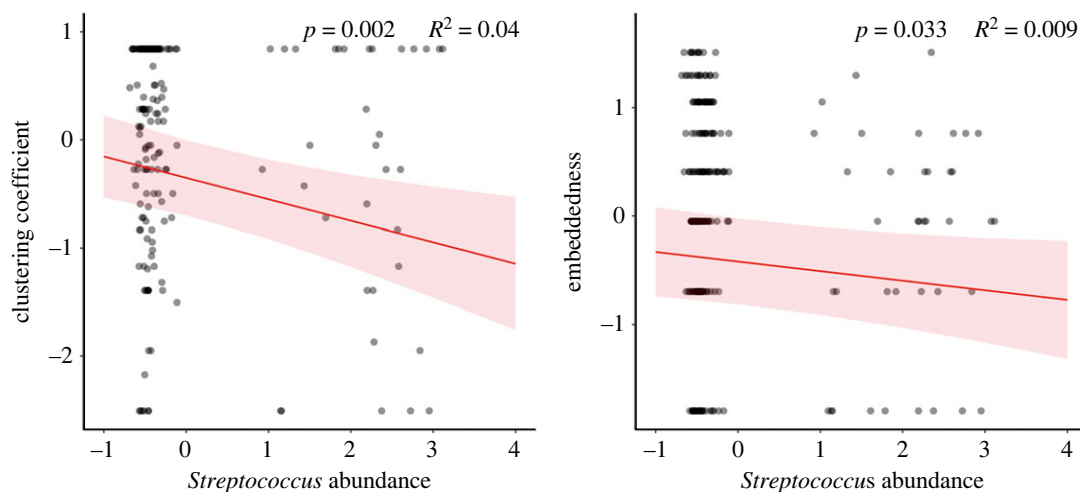
Alpha microbiome diversity was negatively associated with sociality. Shannon–Weiner diversity was negatively associated with social strength ( $B = -0.108$ ,  $p = 0.039$ ; figure 2). This model had a marginal  $R^2$  value of 26.0% and a conditional  $R^2$  value of 59.9%. Shannon–Weiner diversity index as a fixed effect alone explained 1.60% of the marginal semi-partial  $R^2$  variance, further suggesting that the relationship is relatively modest. Similar to the Shannon–Wiener diversity index, Faith's phylogenetic diversity measure was statistically significant with a weak negative association to strength ( $B = -0.123$ ,  $p = 0.028$ ). This model had a marginal  $R^2$  value of 24.7% and a conditional  $R^2$  value of 60.3%. Faith's phylogenetic diversity as a fixed effect explained 1.90% of the marginal semi-partial  $R^2$  variance, again suggesting that diversity, while important, has a modest relationship. Overall, microbial diversity was modestly associated with specific attributes of sociality, namely the number of social interactions an individual participated in (figure 2).

Multivariate analysis of beta diversity via *adonis2* showed significant differences across feature IDs in individual ID and year, exhibiting variability in diversity among individuals across multiple years. In addition, age class (yearling or adult), sex, valley location (higher elevation or lower elevation), colony area and group size also showed significant differences (table 3). The social network measures embeddedness and eigenvector centrality exhibited a significant difference across feature IDs in beta diversity, suggesting beta diversity associates with variation among individual connectivity and position in their network (table 3).

### 3.3. Gut microbe abundance explains variation in some social network measures

Among our selected microbes (table 1), 16 of the 17 did not show a statistically significant relationship with social behaviour. However, some specific microbial genera had significant relationships to sociality.





**Figure 3.** Statistically significant relationships between social position and *Streptococcus* spp. abundance. Clustering coefficient represents if an individual's social partners are also social partners themselves and embeddedness represents how well connected an individual is within the overall structure of the group. Embeddedness was  $\log_{10}$  transformed and clustering coefficient, embeddedness and *Streptococcus* abundance were scaled (mean-centred and divided by 1 s.d.; [88]).  $p$ -value and marginal semi-partial  $R^2$  for each fixed effect are reported.

**Table 3.** Beta diversity results from a PERMANOVA for each measure of sociality, individual attributes (i.e. ID, sex, age class, location) and year. *Italic values represent statistical significance (alpha = 0.05).*

measure	d.f.	sums of sq.	mean sq.	F-model	$R^2$	$p$ -value
individual ID	158	21.007	0.133	1.089	0.635	< 0.001
year	1	0.574	0.574	4.517	0.0174	< 0.001
age class	1	0.195	0.195	1.517	0.00594	0.032
sex	1	0.488	0.488	3.832	0.0149	< 0.001
valley location	1	0.357	0.357	2.790	0.0109	< 0.001
group size	14	2.652	0.189	1.511	0.0807	< 0.001
colony area	16	2.963	0.185	1.481	0.09	< 0.001
degree	23	2.924	0.127	0.986	0.089	0.608
strength	129	16.687	0.129	1.008	0.508	0.392
closeness	74	9.765	0.132	1.035	0.297	0.119
eigenvector centrality	50	8.147	0.163	1.352	0.248	< 0.001
clustering coefficient	46	6.089	0.132	1.034	0.185	0.134
embeddedness	8	1.450	0.181	1.425	0.0441	< 0.001

In particular, *Streptococcus* was negatively associated with two measures of social connectivity, clustering coefficient ( $B = -0.198$ ,  $p = 0.002$ ; figure 3) and embeddedness ( $B = -0.101$ ,  $p = 0.033$ ; figure 3). For the clustering coefficient model, the marginal  $R^2$  value was 16.1% and a conditional  $R^2$  value of 26.6%. *Streptococcus* spp. explained 4.0% of the marginal semi-partial  $R^2$  variance. For the embeddedness and *Streptococcus* abundance model, the marginal  $R^2$  value was 35.6% and a conditional  $R^2$  value of 57.9%. *Streptococcus* spp. as a fixed effect explained 0.9% of the marginal semi-partial  $R^2$  variance, indicating a very modest explanatory value of this microbe to embeddedness.

## 4. Discussion

Although the study of the impacts of sociality on the microbiomes of free-living organisms are in their infancy, recent studies indicate that sociality can shape the diversity and taxonomic composition of

gut microbiomes [27,28]. Leveraging a unique long-term dataset on wild marmot colonies, our structured, exploratory analysis showed that approximately 4% of fitted models had statistically significant relationships between features of the intestinal microbiome and an individual's connectivity and position in their social network. These results suggest the gut microbiome has a modest, but in some cases specific and potentially relevant, relationship with an individual's social behaviour in a wild, free-living social mammal population.

The absence of a relationship between social behaviour and the abundance of most microbial taxa may be due to the homogeneity of marmot lifestyles and microbe exposure, particularly within their social groups. Microbe acquisition depends on diet and ingestion of microbe-rich materials [94,95] and marmots experience minimal variation in these key factors [96–98]. Across our study sites, marmots share a similar diet of vegetation and largely remain in the same space, meaning they are not coming across new vegetation often. Within a group, individuals also share burrows and forage in similar locations and thus they may ingest fecal matter. This potential coprophagia may homogenize their gut microbiome, as seen in captive co-housed rodents [99]. This may reduce microbiome variation and limit the ability to detect statistically significant differences in microbial diversity with respect to social behaviour. These results align with previous studies into how captivity affects animal microbiomes, indicating that repeated behaviours and diet homogeneity leads to lower overall microbial variance and diversity, even in wild mammalian systems [100,101]. More mobile species and those with a more diverse diet, like carnivores or omnivores, may have more diverse gut flora [4,33].

Microbial diversity had modest associations with affiliative strength; both Shannon–Weiner's diversity index and Faith's phylogenetic diversity were negatively associated with the social network statistic. As increased microbial diversity is associated with gut stability and increased fitness in other systems [14,49], this result is surprising as increased sociality is typically detrimental to fitness in this system [43,45–47]. As previously stated, this result may be explained by marmots having relatively homogeneous diets and environmental exposure to microbes; as such, increased diversity may be a product of exposure to negative microbes that may reduce energy levels and engagement in sociality. This phenomenon has been observed in other systems where exposure to sickness-inducing microbes and parasites can cause changes in time and energy budgets [102]. Additionally, weighted beta microbial diversity exhibited significant differences in individual ID, year, age class, sex, valley location and group size. Interestingly, individual ID explained the most variation in beta diversity, indicating that each individual marmot varies in microbiome composition. While we observed high microbial homogeneity between individuals overall, these results also indicate that there is observable variance in microbial composition across all individuals, aligning with literature that the microbiome is first and foremost an individualistic metric [94]. Furthermore, group size showed a significant difference across beta diversity, indicating that larger groups differ in microbial diversity to smaller social groups. This may be due to proximity because as group sizes increase, individuals are more likely to engage with similar fecal matter and obtain similar diet materials, indicating they may have more similar and less diverse microbiomes overall than those in smaller groups. For social network statistics, we observed significant differences for eigenvector centrality and embeddedness, with eigenvector centrality being the largest predictor of variance in beta diversity. This shows that social position is associated with variance in beta diversity, suggesting more central individuals, who may use greater space, may have more diverse microbiomes. However, properly evaluating this hypothesis requires additional detailed study.

Notably, these microbial diversity metrics emphasize slightly different aspects of the microbiome. Shannon–Weiner's diversity index calculates diversity based on the number of microbes and their relative abundance. Faith's phylogenetic diversity index considers the number of microbes, but also the number of unique features arising as a function of phylogenetic tree branch length. This difference can yield notable differences, since microbial characterization is not accounted for in estimating diversity using Shannon–Weiner's diversity index [103]. Further, only clustering coefficient and embeddedness were observed to have statistically significant differences in beta diversity, suggesting microbe presence and relative differences may explain some variation in social network position. These results suggest that there is a contributing factor of phylogenetic microbial diversity that may have important consequences for sociality, possibly contributing to fitness in this species [41,42,44–47].

Despite largely no statistically significant relationships between specific microbe's abundance and social network traits, we did observe a relationship with *Streptococcus* spp. abundance. *Streptococcus* spp. has been negatively associated with sociality in wild primates [27]. Here, *Streptococcus* spp. was negatively associated with both clustering coefficient and embeddedness, measures that capture both

direct and indirect aspects of social interactions. Interestingly, there are many pathogenic species of *Streptococcus*, and this may suggest health and energy is associated with the ability to engage in social interactions [104]. For example, a marmot that has greater *Streptococcus* spp. abundance may allocate metabolic or cellular resources to immune function, resulting in less available energy resources for social interactions [105,106]. However, in marmots, pathogenic species of this genus (*Streptococcus bovis* and *Streptococcus equi*) were rare. Few individuals had *S. bovis* in their microbiome with individuals within the same years and colony areas exhibiting higher abundance of this species. These results indicate that *S. bovis* may be influencing marmot fitness due to the possible transmission of microbes through closely related individuals. However, further examination of the mode of microbial transmission is necessary to determine the mechanism. Furthermore, because the genus *Streptococcus* contains other opportunistic pathogens that produce inflammation in other species, this may indicate *Streptococcus*'s potential role in modulating physiological stress and potentially further limiting sociality [107,108].

The mechanisms of the brain–gut axis are understudied and their causality is complex. Previous literature has identified some of these difficulties, such as multiple factors influencing microbial content simultaneously [109]. Similarly, identifying the method of how microbial content is shared is difficult in the wild, and especially in burrowing species [28]. For these reasons, we chose to not examine the direction of causality directly, but future work in identifying relationships between social attributes and the microbiome will aid development of formal structural equation models (e.g. [110,111]). Further study is also needed to expand our knowledge of the reverse relationship and casual mechanism: how social behaviour drives microbiome composition in the wild.

Overall, we have shown that microbial variation in a wild populations' gut microbiome may have a modest, but specific and significant, relationship with sociality. Our results suggest gut microbial diversity may modulate sociability through the number of social interactions an individual partakes in, while pathogenic microbes may reduce sociality and influence an individual's position within their social network. This is consistent with previous literature indicating that microbes modulate energy balance and time allocated to engaging in direct social interactions. Further study can follow previous literature by incorporating proximity, kinship and sex in identifying how these microbial relationships across individuals develop and vary [28]. Future studies should also explore more obligately social animals (who largely benefit from increased social interactions, unlike the facultatively social yellow-bellied marmot; [48]), as the role of the microbiome in social behaviour may have a different strength and direction in this system. Symbiotic gut microbes are crucial to the survival of all species and thus understanding the extent and importance of these interactions in the wild is necessary to further understand the causes and consequences of organismal fitness.

**Ethics.** Data were collected under the UCLA Institutional Animal Care and Use protocol (2001-191-01, renewed annually) and with permission from the Colorado Parks and Wildlife (TR917, renewed annually).

**Data accessibility.** Data and code to replicate these analyses are archived at OSF: <http://www.doi.org/10.17605/OSF.IO/F89HR> [112].

The data are provided in electronic supplementary material [113].

**Declaration of AI use.** We have not used AI-assisted technologies in creating this article.

**Authors' contributions.** M.P.: conceptualization, data curation, formal analysis, investigation, methodology, project administration, visualization, writing—original draft, writing—review and editing; S.D.: data curation, formal analysis, writing—review and editing; G.J.: data curation, formal analysis, writing—review and editing; S.R.T.: data curation, formal analysis, writing—review and editing; P.H.B.: funding acquisition, supervision, writing—review and editing; C.S.P.: conceptualization, data curation, formal analysis, investigation, methodology, project administration, supervision, visualization, writing—original draft, writing—review and editing; D.T.B.: conceptualization, data curation, formal analysis, funding acquisition, investigation, methodology, project administration, resources, supervision, visualization, writing—original draft, writing—review and editing.

All authors gave final approval for publication and agreed to be held accountable for the work performed therein.

**Conflict of interest declaration.** We declare we have no competing interests.

**Funding.** This work was supported by the National Geographic Society, UCLA (Faculty Senate, the Division of Life Sciences and the Department of Ecology and Evolutionary Biology), the U.S. National Science Foundation (I.D.B.R.-0754247, D.E.B.-1119660 and 1557130 to D.T.B.; D.B.I. 0242960, 0731346 and 1226713 to the Rocky Mountain Biological Laboratory), the Animal Behaviour Society, the American Society of Mammologists, UCLA Dissertation Fellowship and the Rocky Mountain Biological Laboratory.

**Acknowledgements.** We thank all the marmoteers who collected field data, Elaine Hsiao for conceptual and statistical advice as well as comments on an earlier draft, Julien Martin for managing the database, and the staff at the Rocky Mountain Biology Laboratory for support. We also thank the Blumstein Lab, editorial board and two anonymous reviewers for feedback on earlier drafts.

## References

- Ley RE *et al.* 2008 Evolution of mammals and their gut microbes. *Science* **320**, 1647–1651. (doi:10.1126/science.1155725)
- Moeller AH *et al.* 2016 Cospeciation of gut microbiota with hominids. *Science* **353**, 380–382. (doi:10.1126/science.aaf3951)
- Grossin M, Mazel F, Sanders JG, Smillie CS, Lavergne S, Thuiller W, Alm EJ. 2017 Unraveling the processes shaping mammalian gut microbiomes over evolutionary time. *Nat. Commun.* **8**, 14319. (doi:10.1038/ncomms14319)
- Grosser S, Sauer J, Pajmans AJ, Caspers BA, Forcada J, Wolf JB, Hoffman JI. 2019 Fur seal microbiota are shaped by the social and physical environment, show mother–offspring similarities and are associated with host genetic quality. *Mol. Ecol.* **28**, 2406–2422. (doi:10.1111/mec.15070)
- Neish AS. 2009 Microbes in gastrointestinal health and disease. *Gastroenterology* **136**, 65–80. (doi:10.1053/j.gastro.2008.10.080)
- Cryan JF *et al.* 2019 The microbiota-gut-brain axis. *Physiol. Rev.* **99**, 1877–2013. (doi:10.1152/physrev.00018.2018)
- Turnbaugh P *et al.* 2006 An obesity-associated gut microbiome with increased capacity for energy harvest. *Nature* **444**, 1027–1031. (doi:10.1038/nature05414)
- Xiao H, Kang S. 2020 The role of the gut microbiome in energy balance with a focus on the gut-adipose tissue axis. *Front. Genet.* **11**, 297. (doi:10.3389/fgene.2020.00297)
- Fung TC, Olson CA, Hsiao EY. 2017 Interactions between the microbiota, immune and nervous systems in health and disease. *Nat. Neurosci.* **20**, 145–155. (doi:10.1038/nn.4476)
- Sarkar A *et al.* 2020 The role of the microbiome in the neurobiology of social behaviour. *Biol. Rev.* **95**, 1131–1166. (doi:10.1111/brv.12603)
- Berding K, Holscher HD, Arthur AE, Donovan SM. 2018 Fecal microbiome composition and stability in 4- to 8-year old children is associated with dietary patterns and nutrient intake. *J. Nutr. Biochem.* **56**, 165–174. (doi:10.1016/j.jnutbio.2018.01.002)
- Stressmann FA *et al.* 2012 Long-term cultivation-independent microbial diversity analysis demonstrates that bacterial communities infecting the adult cystic fibrosis lung show stability and resilience. *Thorax* **67**, 867–873. (doi:10.1136/thoraxjnl-2011-200932)
- García-García N, Tamames J, Linz AM, Pedrós-Alió C, Puente-Sánchez F. 2019 Microdiversity ensures the maintenance of functional microbial communities under changing environmental conditions. *ISME J.* **13**, 2969–2983. (doi:10.1038/s41396-019-0487-8)
- Erkus O *et al.* 2013 Multifactorial diversity sustains microbial community stability. *ISME J.* **7**, 2126–2136. (doi:10.1038/ismej.2013.108)
- Hsiao EY *et al.* 2013 Microbiota modulate behavioral and physiological abnormalities associated with neurodevelopmental disorders. *Cell* **155**, 1451–1463. (doi:10.1016/j.cell.2013.11.024)
- Vuong HE, Yano JM, Fung TC, Hsiao EY. 2017 The microbiome and host behavior. *Annu. Rev. Neurosci.* **40**, 21–49. (doi:10.1146/annurev-neuro-072116-031347)
- Jašarević E, Morrison KE, Bale TL. 2016 Sex differences in the gut microbiome–brain axis across the lifespan. *Phil. Trans. R. Soc. B* **371**, 20150122. (doi:10.1098/rstb.2015.0122)
- Neff CP *et al.* 2016 Diverse intestinal bacteria contain putative zwitterionic capsular polysaccharides with anti-inflammatory properties. *Cell Host and Microbe* **20**, 535–547. (doi:10.1016/j.chom.2016.09.002)
- Foster JA, Rinaman L, Cryan JF. 2017 Stress and the gut-brain axis: regulation by the microbiome. *Neurobiol. Stress* **7**, 124–136. (doi:10.1016/j.ynstr.2017.03.001)
- Johnson KWA. 2020 Gut microbiome composition and diversity are related to human personality traits. *Human Microb. J.* **15**, 100069. (doi:10.1016/j.humic.2019.100069)
- Diaz Hejtz R, Wang S, Anuar F, Qian Y, Björkholm B, Samuelsson A, Hibberd ML, Forsberg H, Pettersson S. 2011 Normal gut microbiota modulates brain development and behavior. *Proc. Natl Acad. Sci. USA* **108**, 3047–3052. (doi:10.1073/pnas.1010529108)
- Bruckner JJ *et al.* 2022 The microbiota promotes social behavior by modulating microglial remodeling of forebrain neurons. *PLoS Biol.* **20**, e3001838. (doi:10.1371/journal.pbio.3001838)
- Alexander R. 1974 The evolution of social behavior. *Annu. Rev. Ecol. Syst.* **5**, 325–383. (doi:10.1146/annurev.es.05.110174.001545)
- Janson CH, Goldsmith ML. 1995 Predicting group size in primates: foraging costs and predation risks. *Behav. Ecol.* **6**, 326–336. (doi:10.1093/beheco/6.3.326)
- Krause J, Lusseau D, James R. 2009 Animal social networks: an introduction. *Behav. Ecol. Sociobiol.* **63**, 967–973. (doi:10.1007/s00265-009-0747-0)
- Makagon MM, McCowan B, Mench JA. 2012 How can social network analysis contribute to social behavior research in applied ethology? *Appl. Anim. Behav. Sci.* **138**, 152–161. (doi:10.1016/j.applanim.2012.02.003)
- Johnson KV-A, Watson KK, Dunbar RI, Burnet PW. 2022 Sociability in a non-captive macaque population is associated with beneficial gut bacteria. *Front. Microbiol.* **13**, 1032495. (doi:10.3389/fmicb.2022.1032495)
- Raulo A, Allen BE, Troitsky T, Husby A, Firth JA, Coulson T, Knowles SC. 2021 Social networks strongly predict the gut microbiota of wild mice. *ISME J.* **15**, 2601–2613. (doi:10.1038/s41396-021-00949-3)
- Tung J *et al.* 2015 Social networks predict gut microbiome composition in wild baboons. *elife* **4**, e05224. (doi:10.7554/eLife.05224)
- Perofsky AC, Lewis RJ, Abondano LA, Di Fiore A, Meyers LA. 2017 Hierarchical social networks shape gut microbial composition in wild Verreaux's sifaka. *Proc. R. Soc. B* **284**, 20172274. (doi:10.1098/rspb.2017.2274)
- Lucas J, Bill B, Stevenson B, Kaspari M. 2017 The microbiome of the ant-built home: the microbial communities of a tropical arboreal ant and its nest. *Ecosphere* **8**, e01639. (doi:10.1002/ecs2.1639)
- Orkin JD, Webb SE, Melin AD. 2019 Small to modest impact of social group on the gut microbiome of wild Costa Rican capuchins in a seasonal forest. *Am. J. Primatol.* **81**, e22985. (doi:10.1002/ajp.22985)
- Theis KR, Schmidt TM, Holekamp KE. 2012 Evidence for a bacterial mechanism for group-specific social odors among hyenas. *Sci. Rep.* **2**, 615. (doi:10.1038/srep00615)
- Arentsen T, Raith H, Qian Y, Forsberg H, Diaz Hejtz R. 2015 Host microbiota modulates development of social preference in mice. *Microb. Ecol. Health Dis.* **26**, 29719. (doi:10.3402/mehd.v26.29719)
- Ezenwa VO, Gerardo NM, Inouye DW, Medina M, Xavier JB. 2012 Animal behavior and the microbiome. *Science* **338**, 198–199.
- Clayton JB *et al.* 2016 Captivity humanizes the primate microbiome. *Proc. Natl Acad. Sci. USA* **113**, 10 376–10 381. (doi:10.1073/pnas.1521835113)
- Uenishi G, Fujita S, Ohashi G, Kato A, Yamauchi S, Matsuzawa T, Ushida K. 2007 Molecular analyses of the intestinal microbiota of chimpanzees in the wild and in captivity. *Am. J. Primatol.* **69**, 367–376. (doi:10.1002/ajp.20351)
- Bolnick DI, Snowberg LK, Hirsch PE, Lauber CL, Knight R, Caporaso JG, Svanbäck R. 2014 Individuals' diet diversity influences gut microbial diversity in two freshwater fish (threespine stickleback and Eurasian perch). *Ecol. Lett.* **17**, 979–987. (doi:10.1111/ele.12301)
- Rosshart SP *et al.* 2019 Laboratory mice born to wild mice have natural microbiota and model human immune responses. *Science* **365**, eaaw4361. (doi:10.1126/science.aaw4361)
- Armitage KB. 2014 *Marmot biology: sociality, individual fitness, and population dynamics*. Cambridge, UK: Cambridge University Press.
- Montero AP, Williams DM, Martin JG, Blumstein DT. 2020 More social female yellow-bellied marmosets, *Marmota flaviventer*, have enhanced summer survival. *Anim. Behav.* **160**, 113–119. (doi:10.1016/j.anbehav.2019.12.013)
- Philson CS, Blumstein DT. 2023 Emergent social structure is typically not associated with survival in a facultatively social mammal. *Biol. Lett.* **19**, 20220511. (doi:10.1098/rsbl.2022.0511)
- Yang WJ, Maldonado-Chaparro AA, Blumstein DT. 2016 A cost of being amicable in a hibernating mammal. *Behav. Ecol.* **28**, 11–19. (doi:10.1093/beheco/arw125)
- Fuong H, Maldonado-Chaparro A, Blumstein DT. 2015 Are social attributes associated with alarm calling propensity? *Behav. Ecol.* **26**, 587–592. (doi:10.1093/beheco/aru235)
- Wey TW, Blumstein DT. 2012 Social attributes and associated performance measures in marmosets: bigger male bullies and weakly affiliating females have higher annual

- reproductive success. *Behav. Ecol. Sociobiol.* **66**, 1075–1085. (doi:10.1007/s00265-012-1358-8)
46. Philson CS, Blumstein DT. 2023 Group social structure has limited impact on reproductive success in a wild mammal. *Behav. Ecol.* **34**, 89–98. (doi:10.1093/beheco/ara102)
47. Blumstein DT, Williams DM, Lim AN, Kroeger S, Martin JG. 2018 Strong social relationships are associated with decreased longevity in a facultatively social mammal. *Proc. R. Soc. B* **285**, 20171934. (doi:10.1098/rspb.2017.1934)
48. Snyder-Mackler N *et al.* 2020 Social determinants of health and survival in humans and other animals. *Science* **368**, eaax9553. (doi:10.1126/science.aax9553)
49. Shade A *et al.* 2012 Lake microbial communities are resilient after a whole-ecosystem disturbance. *ISME J.* **6**, 2153–2167. (doi:10.1038/ismej.2012.56)
50. Heuer H, Abdo Z, Smalla K. 2008 Patchy distribution of flexible genetic elements in bacterial populations mediates robustness to environmental uncertainty. *FEMS Microbiol. Ecol.* **65**, 361–371. (doi:10.1111/j.1574-6941.2008.00539.x)
51. Rodríguez-Valera F, Martín-Cuadrado AB, Rodríguez-Brito B, Pasic L, Thingstad TF, Rohwer F, Mira A. 2009 Explaining microbial population genomics through phage predation. *Nat. Rev. Microbiol.* **7**, 828–836. (doi:10.1038/npre.2009.3489.1)
52. Bailey MT, Dowd SE, Galley JD, Hufnagle AR, Allen RG, Lyte M. 2011 Exposure to a social stressor alters the structure of the intestinal microbiota: implications for stressor-induced immunomodulation. *Brain Behav. Immun.* **25**, 397–407. (doi:10.1016/j.bbi.2010.10.023)
53. Degregori S, Johnson GC, Barber P, Blumstein DT. In press. *Firmicutes* and *Bacteroidetes* explain mass gain variation in an obligate hibernator. *J. Mammal.*
54. Elephant K *et al.* 2021 Bacteroidota and Lachnospiraceae integration into the gut microbiome at key time points in early life are linked to infant neurodevelopment. *Gut Microbes* **13**, 1997560. (doi:10.1080/19490976.2021.1997560)
55. Purswani J, Romero-Zalaz RC, Martín-Platero AM, Guisado IM, González-López J, Pozo C. 2017 Bsocial: deciphering social behaviors within mixed microbial populations. *Front. Microbiol.* **8**, 919. (doi:10.3389/fmicb.2017.00919)
56. Wang T, Ye Y, Ji J, Yang X, Xu J, Wang JS, Han X, Zhang T, Sun X. 2022 Diet composition affects long-term zearalenone exposure on the gut–blood–liver axis metabolic dysfunction in mice. *Ecotoxicol. Environ. Saf.* **236**, 113466. (doi:10.1016/j.ecoenv.2022.113466)
57. Bravo JA, Forsythe P, Chew MV, Escaravage E, Savignac HM, Dinan TG, Bienenstock J, Cryan JF. 2011 Ingestion of *Lactobacillus* strain regulates emotional behavior and central GABA receptor expression in a mouse via the vagus nerve. *Proc. Natl Acad. Sci. USA* **108**, 16 050–16 055. (doi:10.1073/pnas.1102999108)
58. Valles-Colomer M *et al.* 2019 The neuroactive potential of the human gut microbiota in quality of life and depression. *Nat. Microbiol.* **4**, 623–632. (doi:10.1038/s41564-018-0337-x)
59. Qiu X, Zhang M, Yang X, Hong N, Yu C. 2013 Faecalibacterium prausnitzii upregulates regulatory T cells and anti-inflammatory cytokines in treating TNBS-induced colitis. *J. Crohn's and Colitis* **7**, e558–e568. (doi:10.1016/j.crohns.2013.04.002)
60. Herrera P, Kwon YM, Ricke SC. 2009 Ecology and pathogenicity of gastrointestinal *Streptococcus bovis*. *Anaerobe* **15**, 44–54. (doi:10.1016/j.anaerobe.2008.11.003)
61. Van Vuren D, Armitage KB. 1991 Duration of snow cover and its influence on life-history variation in yellow-bellied marmots. *Can. J. Zool.* **69**, 1755–1758. (doi:10.1139/z91-244)
62. Blumstein DT. 2006 The multipredator hypothesis and the evolutionary persistence of antipredator behavior. *Ethology* **112**, 209–217. (doi:10.1111/j.1439-0310.2006.01209)
63. Maldonado-Chaparro AA, Hubbard L, Blumstein DT. 2015 Group size affects social relationships in yellow-bellied marmots (*Marmota flaviventris*). *Behav. Ecol.* **26**, 909–915. (doi:10.1093/beheco/aru034)
64. Blumstein DT, Wey TW, Karisa T. 2009 A test of the social cohesion hypothesis: interactive female marmots remain at home. *Proc. R. Soc. B* **276**, 3007–3012. (doi:10.1098/rspb.2009.0703)
65. Armitage KB. 1962 Social behaviour of a colony of the yellow-bellied marmot (*Marmota flaviventris*). *Anim. Behav.* **10**, 319–331. (doi:10.1016/0003-3472(62)90055-6)
66. Caporaso JG, Lauber CL, Walters WA, Berg-Lyons D, Lozupone CA, Turnbaugh PJ, Fierer N, Knight R. 2011 Global patterns of 16S rRNA diversity at a depth of millions of sequences per sample. *Proc. Natl Acad. Sci. USA* **108**, 4516–4522. (doi:10.1073/pnas.1000080107)
67. Bolyen E *et al.* 2019 Reproducible, interactive, scalable and extensible microbiome data science using QIIME 2. *Nat. Biotechnol.* **37**, 852–857. (doi:10.1038/s41587-019-0209-9)
68. Li H, Li T, Beasley DAE, Hedénc P, Xiao Z, Zhang S, Li J, Lin Q, Li X. 2016 Diet diversity is associated with beta but not alpha diversity of pika gut microbiota. *Front. Microbiol.* **7**, 1169. (doi:10.3389/fmicb.2016.01169)
69. Li S, Vogtmann E, Graubard BI, Gail MH, Abnet CC, Shi J. 2022 *fast.adonis*: A computationally efficient non-parametric multivariate analysis of microbiome data for large-scale studies. *Bioinform. Adv.* **2**, vbac044. (doi:10.1093/bioadv/vbac044)
70. McMurdie PJ, Holmes S. 2013 Phyloseq: an R package for reproducible interactive analysis and graphics of microbiome census data. *PLoS ONE* **8**, e61217. (doi:10.1371/journal.pone.0061217)
71. R Core Team. 2022 *R: a language and environment for statistical computing, version 4.1.3*. Vienna, Austria: R Foundation for Statistical Computing. See <https://www.R-project.org/>.
72. Gloor GB, Macklaim JM, Pawlowsky-Glahn V, Egozcue JJ. 2017 Microbiome datasets are compositional: and this is not optional. *Front. Microbiol.* **8**, 2224. (doi:10.3389/fmicb.2017.02224)
73. Quinn TP, Erb I, Gloor G, Notredame C, Richardson MF, Crowley TM. 2019 A field guide for the compositional analysis of any-omics data. *GigaScience* **8**, giz107. (doi:10.1093/gigascience/giz107)
74. Whitehead H. 2009 SOCPROG programs: analysing animal social structures. *Behav. Ecol. Sociobiol.* **63**, 765–778. (doi:10.1007/s00265-008-0697-y)
75. Cairns SJ, Schwager SJ. 1987 A comparison of association indices. *Anim. Behav.* **35**, 1454–1469. (doi:10.1016/S0003-3472(87)80018-0)
76. Csardi G, Nepusz T. 2006 The igraph software package for complex network research. *J. Complex Systems* **1695**, 1–9.
77. Rosvall M, Bergstrom CT. 2008. Maps of random walks on complex networks reveal community structure. *Proc. Natl Acad. Sci.* **105**, 1118–1123.
78. Rosvall M, Axelsson D, Bergstrom CT. 2009 The map equation. *Eur. Phys. J. Spec. Top.* **178**, 13–23. (doi:10.1140/epjst/e2010-01179-1)
79. Sharon G, Segal D, Ringo JM, Hefetz A, Zilber-Rosenberg I, Rosenberg E. 2010 Commensal bacteria play a role in mating preference of *Drosophila melanogaster*. *Proc. Natl Acad. Sci. USA* **107**, 20 051–20 056. (doi:10.1073/pnas.1009906107)
80. Silk MJ, Jackson AL, Croft DP, Colhoun K, Bearhop S. 2015 The consequences of unidentifiable individuals for the analysis of an animal social network. *Anim. Behav.* **104**, 1–11. (doi:10.1016/j.anbehav.2015.03.005)
81. Flack JC, Girvan M, de Waal FB, Krakauer DC. 2006 Policing stabilizes construction of social niches in primates. *Nature* **439**, 426–429. (doi:10.1038/nature04326)
82. Wey TW, Blumstein DT. 2010 Social cohesion in yellow-bellied marmots is established through age and kin structuring. *Anim. Behav.* **79**, 1343–1352. (doi:10.1016/j.anbehav.2010.03.008)
83. Rimbach R, Bisanzio D, Galvis N, Link A, Di Fiore A, Gillespie TR. 2015 Brown spider monkeys (*Ateles hybridus*): a model for differentiating the role of social networks and physical contact on parasite transmission dynamics. *Phil. Trans. R. Soc. B* **370**, 20140110. (doi:10.1098/rstb.2014.0110)
84. Lehmann M *et al.* 2015 Loss of functional connectivity is greater outside the default mode network in nonfamilial early-onset Alzheimer's disease variants. *Neurobiol. Aging* **36**, 2678–2686. (doi:10.1016/j.neurobiolaging.2015.06.029)
85. Davis GH, Crofoot MC, Farine DR. 2018 Estimating the robustness and uncertainty of animal social networks using different observational methods. *Anim. Behav.* **141**, 29–44. (doi:10.1016/j.anbehav.2018.04.012)
86. Sánchez-Tójar A, Schroeder J, Farine DR. 2018. A practical guide for inferring reliable dominance hierarchies and estimating their uncertainty. *J. Anim. Ecol.* **87**, 594–608. (doi:10.1111/1365-2656.12776)
87. Bates D, Mächler M, Bolker B, Walker S. 2015 Fitting linear mixed-effects models Using lme4. *J. Stat. Softw.* **67**, 1–48. (doi:10.18637/jss.v067.i01)

88. Becker RA, Chambers JM, Wilks AR. 1988 *The new S language*. Belmont, CA: Wadsworth and Brooks/Cole.
89. Lüdecke D, Ben-Shachar M, Patil I, Waggoner P, Makowski D. 2021 Performance: an R package for assessment, comparison and testing of statistical models. *J. Open Source Softw.* **6**, 3139. (doi:10.21105/joss.03139)
90. Nakagawa S, Schielzeth H. 2013 A general and simple method for obtaining  $R^2$  from generalized linear mixed-effects models. *Methods Ecol. Evol.* **4**, 133–142. (doi:10.1111/j.2041-210x.2012.00261.x)
91. Stoffel MA, Nakagawa S, Schielzeth H. 2021 partR2: partitioning  $R^2$  in generalized linear mixed models. *PeerJ* **9**, e11414. (doi:10.7717/peerj.11414)
92. Wickham H. 2016 *Ggplot2: elegant graphics for data analysis*, version 3.3.5. New York, NY: Springer. See <https://ggplot2.tidyverse.org>.
93. Lüdecke D, Lüdecke MD. 2015 Package 'sjPlot'. R package version, 1(9). See <https://cran.r-project.org/web/packages/sjPlot/index.html>.
94. Leshem A, Segal E, Elinav E. 2020 The gut microbiome and individual-specific responses to diet. *mSystems* **5**, e00665-20. (doi:10.1128/mSystems.00665-20)
95. Renelies-Hamilton J, Germer K, Sillam-Dussès D, Bodawatta KH, Poulsen M. 2021 Disentangling the relative roles of vertical transmission, subsequent colonizations, and diet on cockroach microbiome assembly. *Microb. Ecol.* **6**, e01023-20. (doi:10.1128/mSphere.01023-20)
96. Frase BA, Hoffmann RS. 1980 *Marmota flaviventris*. *Mammalian Species* **135**, 1–8. (doi:10.2307/3503965)
97. Edwards GP. 1997 Predicting seasonal diet in the yellow-bellied marmot: success and failure for the linear programming model. *Oecologia* **112**, 320–330. (doi:10.1007/s004420050315)
98. Evans AW, Williams DM, Blumstein DT. 2021 Producer–scrounger relationships in yellow-bellied marmots. *Anim. Behav.* **172**, 1–7. (doi:10.1016/j.anbehav.2020.11.018)
99. McCafferty J, Mühlbauer M, Gharaibeh RZ, Arthur JC, Perez-Chanona E, Sha W, Jobin C, Fodor AA. 2013 Stochastic changes over time and not founder effects drive cage effects in microbial community assembly in a mouse model. *ISME J.* **7**, 2116–2125. (doi:10.1038/ismej.2013.106)
100. McKenzie VJ *et al.* 2017 The effects of captivity on the mammalian gut microbiome. *Integr. Comp. Biol.* **57**, 690–704. (doi:10.1093/icc/ix090)
101. Xiao Y, Xiao G, Liu H, Zhao X, Sun C, Tan X, Sun K, Liu S, Feng J. 2019 Captivity causes taxonomic and functional convergence of gut microbial communities in bats. *PeerJ* **7**, e6844. (doi:10.7717/peerj.6844)
102. Hicks O, Burthe SJ, Daunt F, Newell M, Butler A, Ito M, Sato K, Green JA. 2018 The energetic cost of parasitism in a wild population. *Proc. R. Soc. B* **285**, 20180489. (doi:10.1098/rspb.2018.0489)
103. Willis AD. 2019 Rarefaction, alpha diversity, and statistics. *Front. Microbiol.* **10**, 2407. (doi:10.3389/fmicb.2019.02407)
104. Giloteaux L, Goodrich JK, Walters WA, Levine SM, Ley RE, Hanson MR. 2016 Reduced diversity and altered composition of the gut microbiome in individuals with myalgic encephalomyelitis/chronic fatigue syndrome. *Microbiome* **4**, 1–12. (doi:10.1186/s40168-016-0171-4)
105. Kiecolt-Glaser JK. 1999 Stress, personal relationships, and immune function: health implications. *Brain Behav. Immun.* **13**, 61–72. (doi:10.1006/brbi.1999.0552)
106. Abdulmir AS, Hafidh RR, Bakar FA. 2011 The association of *Streptococcus bovis/galolyticus* with colorectal tumors: the nature and the underlying mechanisms of its etiological role. *J. Exp. Clin. Cancer Res.* **30**, 11. (doi:10.1186/1756-9966-30-11)
107. Cohen S, Janicki-Deverts D, Doyle WJ, Miller GE, Frank E, Rabin BS, Turner RB. 2012 Chronic stress, glucocorticoid receptor resistance, inflammation, and disease risk. *Proc. Natl Acad. Sci. USA* **109**, 5995–5999. (doi:10.1073/pnas.1118355109)
108. Agranyoni O *et al.* 2021 Gut microbiota determines the social behavior of mice and induces metabolic and inflammatory changes in their adipose tissue. *Npj Biofilms and Microbiomes* **7**, 28. (doi:10.1038/s41522-021-00193-9)
109. Davidson GL, Raulo A, Knowles SCL. 2020 Identifying microbiome-mediated behaviour in wild vertebrates. *Trends Ecol. Evol.* **35**, 972–980. (doi:10.1016/j.tree.2020.06.014)
110. Stevenson TJ, Duddlestone KN, Buck CL. 2014 Effects of season and host physiological state on the diversity, density, and activity of the Arctic ground squirrel cecal microbiota. *Appl. Environ. Microbiol.* **80**, 5611–5622. (doi:10.1128/aem.01537-14)
111. Sommer F, Ståhlman M, Ilkayeva O, Arnemo JM, Kindberg J, Josefsson J, Newgard CB, Fröbert O, Bäckhed F. 2016 The gut microbiota modulates energy metabolism in the hibernating brown bear *Ursus arctos*. *Cell Reports* **14**, 1655–1661. (doi:10.1016/j.celrep.2016.01.026)
112. Pfau M, Degregori S, Johnson G, Tennenbaum SR, Barber PH, Philson CS, Blumstein DT. 2023 Data for: The social microbiome: gut microbiome diversity and abundance are negatively associated with sociality in a wild mammal. OSF. (doi:10.17605/OSF.IO/F89HR)
113. Pfau M, Degregori S, Johnson G, Tennenbaum SR, Barber PH, Philson CS, Blumstein DT. 2023 The social microbiome: gut microbiome diversity and abundance are negatively associated with sociality in a wild mammal. Figshare. (doi:10.6084/m9.figshare.c.6858169)